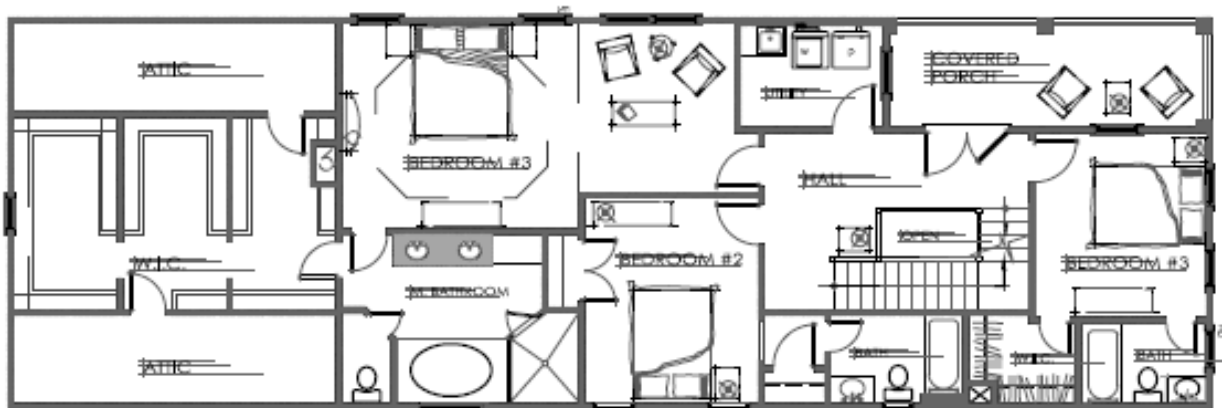
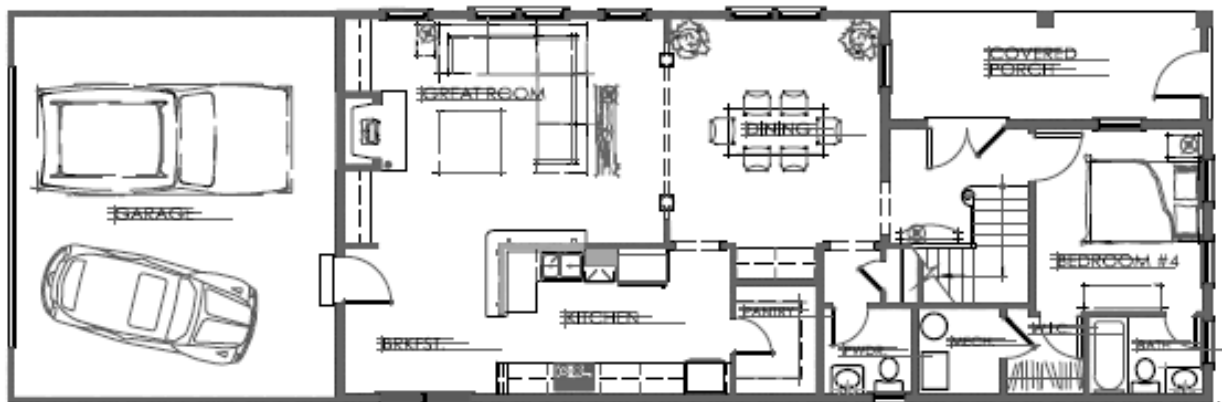


The distinctive design features of the Charleston single house make it a perfect candidate for the narrow urban lot. Since its narrow end faces the street, and its two-story piazza faces the side yard, the single house affords the occupants much privacy. The street entry of the single house leads not into the foyer, but onto a porch, providing a secluded but graceful transition from an urban setting. A grand foyer with an open stairwell greets the visitor. Beyond, a formal dining room can be glimpsed, carefully planned so foot traffic will bypass the table and chairs. The study on the front of the house could serve as an office for the work-at-home professional, or be utilized as a guest room. If desired, the third floor can be completed. It has ample space for two more bedrooms, as well as a sitting area perfect for another computer station and television viewing area.



**Second Floor**



**First Floor**